



CHATTERTON | REES



105 Ebury Street

, London, SW1W 9QU

£1,250,000



105 Ebury Street



Description

A rare opportunity to acquire the top two floors of a Georgian building in prime Belgravia. This circa 850 sq ft flat offers enormous potential to modernise and create an exceptional living space.

With an asking price of under £1,500 per square foot, the property represents genuine value and offers real "meat on the bone" for both end users and investors alike.

Ideally located in the heart of ever-popular Ebury Street, positioned between Eccleston Street and Elizabeth Street. The property is sold on a long leasehold of approximately 160 years.

- Two Bedrooms
- Split Level
- Excellent Location
- One Bathroom
- Development Opportunity
- Circa 160 year lease

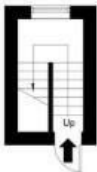




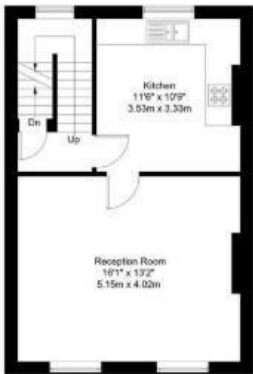
Floor Plan

Ebury Street, SW1W 9QU

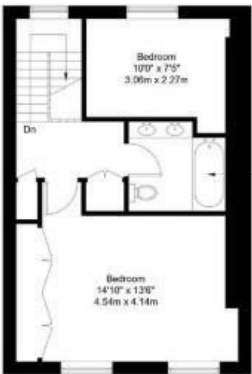
Approx Gross Internal Area = 78.7 sq m / 847 sq ft



First Floor

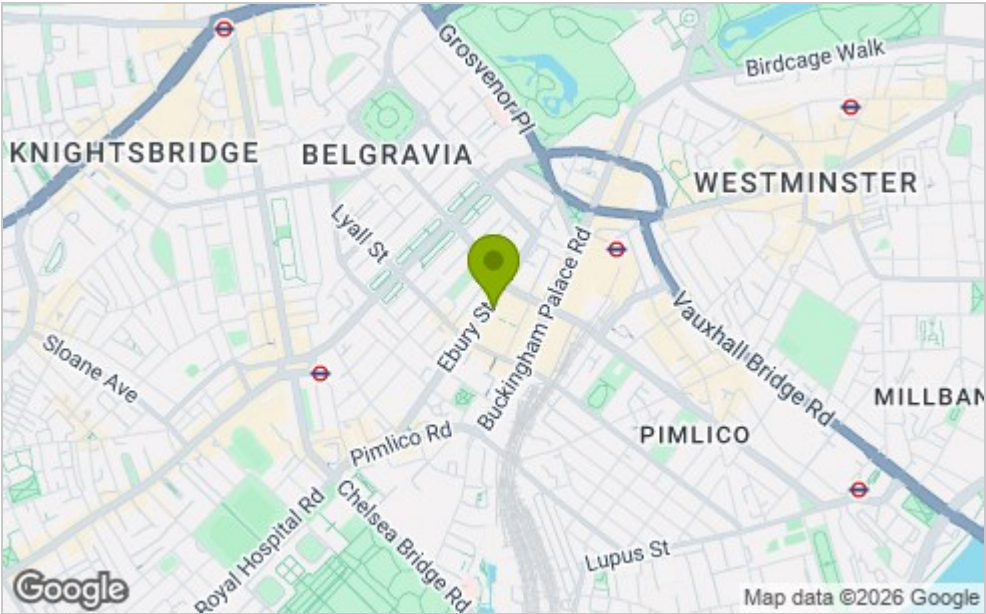


Second Floor



Third Floor

Area Map



Viewing

Please contact our Chatterton Rees Office on 020 3780 0580 if you wish to arrange a viewing appointment for this property or require further information.

These particulars, whilst believed to be accurate are set out as a general outline only for guidance and do not constitute any part of an offer or contract. Intending purchasers should not rely on them as statements of representation of fact, but must satisfy themselves by inspection or otherwise as to their accuracy. No person in this firm's employment has the authority to make or give any representation or warranty in respect of the property.

Energy Efficiency Graph

